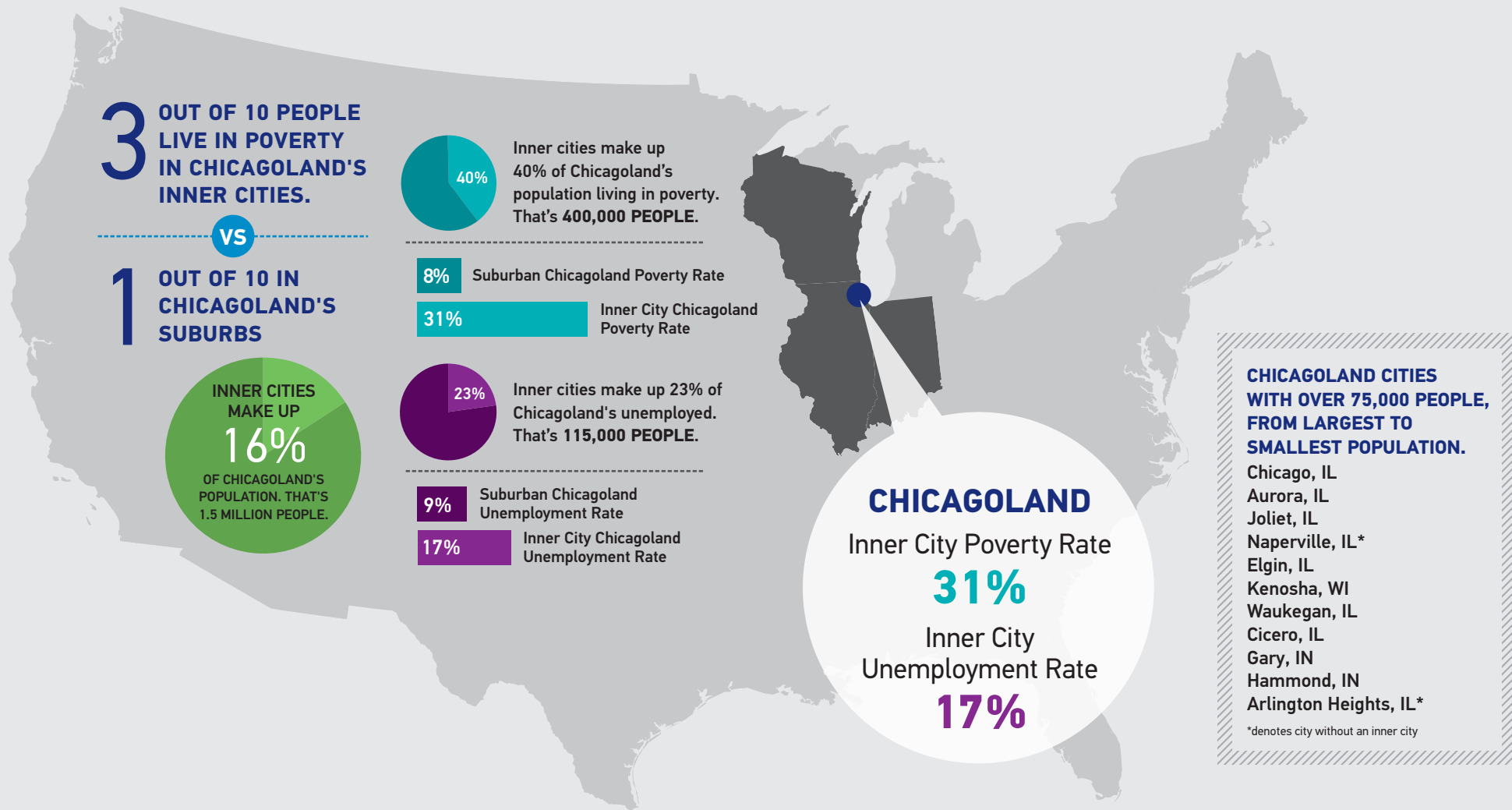


CHICAGOLAND: KEY BATTLEGROUND for the War On Poverty

Inner cities account for a disproportionate amount of Chicagoland's **poverty** and **unemployment**



CHICAGOLAND IS THE CHICAGO-JOLIET-NAPERVILLE, IL-IN-WI METRO AREA MSA. This area contains 14 counties in three states and has **9.4 MILLION PEOPLE**. There are 11 cities with over **75,000 PEOPLE** in Chicagoland, 9 of which have inner cities.

ICIC DEFINES A REGION'S SUBURBS as the MSA minus its cities with over **75,000 PEOPLE**.

There are **328** inner cities in U.S. cities with over **75,000** people.



@icicorg #icifocus