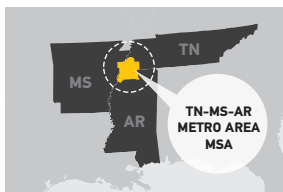
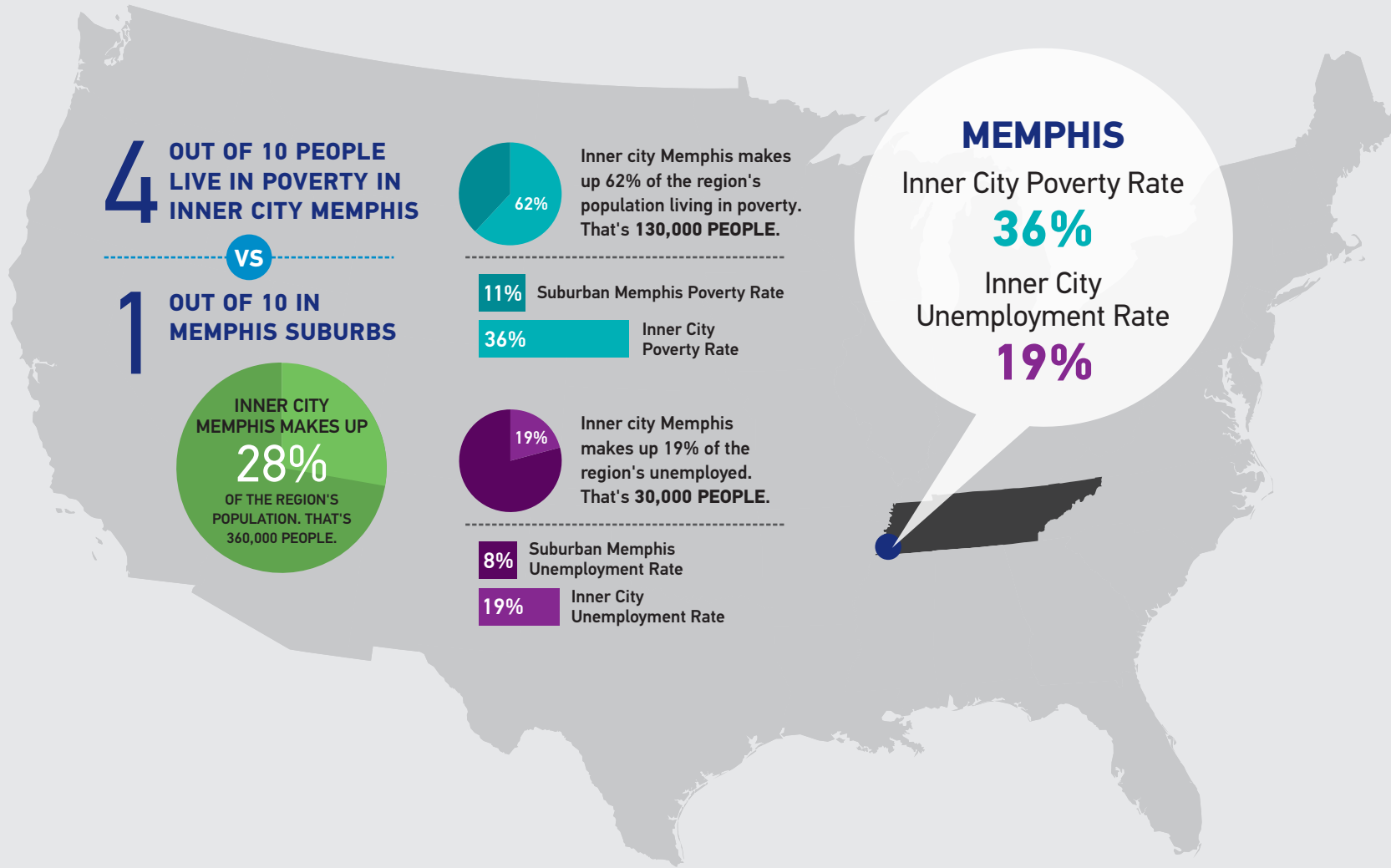


# MEMPHIS: KEY BATTLEGROUND for the War On Poverty

Inner cities account for a disproportionate amount of the Memphis region's **poverty** and **unemployment**



**THE MEMPHIS REGION IS THE MEMPHIS, TN-MS-AR METRO AREA MSA.** This area contains 10 counties in three states and has **1.3 MILLION PEOPLE**, which is about the same number of people that live in New Hampshire. Memphis is the only city with over **75,000 PEOPLE** in the region.

**ICIC DEFINES A REGION'S SUBURBS** as the MSA minus its cities with over **75,000 PEOPLE**.

There are **328** inner cities in U.S. cities with over **75,000** people.



@icicorg #icifocus